

# Arizon AZ-SUR7 Impinj M730

AZ-SUR7-1410111000979

## Overview

### Operating frequency

Global 860-960 MHz

### Air interface protocol

EPC Class 1 Gen 2 ISO 18000-63

### IC

Impinj M700 Series

### Antenna Dimensions

94 x 24 mm

### Industry Segments

Logistics; Manufacturing; Automotive

### Applications

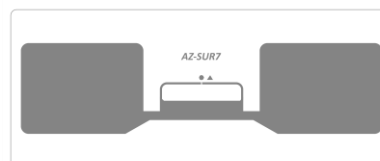
Supply Chain Management; Inventory and Logistics; Asset Management; Shipment Verification

### RoHS

EU Directive 2011/65/EC and Directive (EU) 2015/863

### REACH

Regulation (EC) No 1907/2006



## AZ-SUR7 White Wet Inlay

The Arizon AZ-SUR7 M700 inlay - the ideal solution for supply chain, logistics, and sports timing. Superior performance, high dielectric tolerance, featuring the latest Impinj M700 ICs.

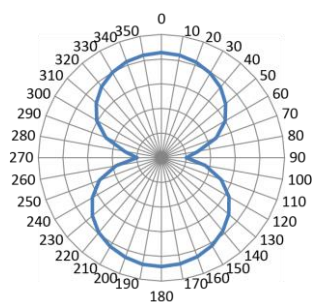
## Technical features

<b>IC</b>	Impinj M730
<b>EPC and User Memory</b>	Please refer to the IC Options table
<b>TID Memory</b>	Please refer to the IC Options table
<b>Inlay Substrate</b>	PET
<b>Product Type</b>	White Wet, Paper Face
<b>Die Cut Dimensions</b>	30 x 100 mm
<b>Face Sheet</b>	80g art paper
<b>Pitch</b>	34.290
<b>Web Width</b>	110.000
<b>Label Orientation</b>	WEL
<b>Adhesive</b>	hot melt
<b>Core Size</b>	76.20 mm
<b>Quantity / Reel</b>	2,000
<b>Reel outer diameter</b>	Max. 200.00 mm
<b>Service Temperature</b>	-20°C to +50°C

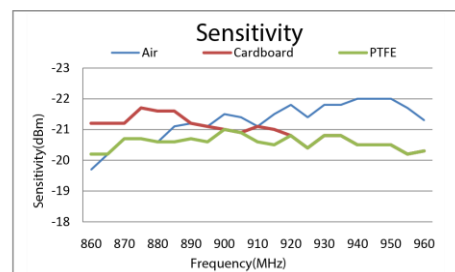
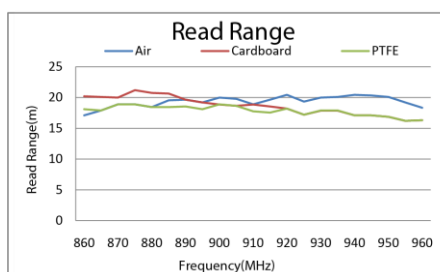
## Tag IC options

	M730	M750	M770	M775	M780	M781
<b>EPC memory (bit)</b>	128	96	128	128	496	128
<b>User memory (bit)</b>	0	32	32	32	128	512
<b>TID (bit)</b>	48	48	48	48	48	48
<b>Unique TID (bit)</b>	48	48	48	48	48	48
<b>Read sensitivity (-dBm)</b>	24	24	24	24	23.5	23.5

## Orientation sensitivity



## Read range



## Contact information

[rfid.supplies/shop](https://rfid.supplies/shop)

[sales@rfid.supplies](mailto:sales@rfid.supplies)

+44 20 203 8080 2050



© 2023 syo.io and rfid.supplies. All graphs are indicative: performance in real life applications may vary. Third party trademarks and/or trade names used herein are the property of their respective owner(s). Some of the trademarks appear for identification purposes only.

Warranty: Please refer to rfid.supplies standard terms and conditions: [https://rfid.supplies/gtc\\_of\\_sale](https://rfid.supplies/gtc_of_sale)

Care and handling: RFID inlays are sensitive to ESD. Observe standard industry practices relating to electronics and RFID to keep environmental impact and static charge to a minimum.

Applications: This product should be tested by the customer / user thoroughly under end use conditions to ensure the product meets the requirements. rfid.supplies does not represent that this product is fit for any particular purpose or use. rfid.supplies reserves the right to modify, change, supplement or discontinue product offerings at any time without notice. The information contained herein is believed to be reliable, but rfid.supplies makes no representation concerning the accuracy or correctness of the data